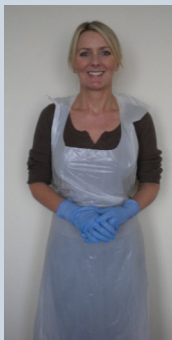


Cleaning and disinfecting a commode or bed pan manually for Care Home settings

Best practice is to always:

- Use a bucket or sink designated for only cleaning commodes or bed pans
- Use disposable cleaning cloths and dispose of after use
- Use 1,000 ppm chlorine-based disinfectant solution, e.g. 50 ml of Milton in 1 litre of cold water
- Ensure pans should be replaced when scratched, stained or the handle is rusted

Follow your local 'Safe disposal of waste Policy' for appropriate waste stream to be used.



1. Wash hands thoroughly with liquid soap, warm running water, dry with paper towels and dispose of. Then put on disposable apron and gloves. Wear eye protection if there is a risk of splashing to the eyes.



2. Cover commode pan with lid and carefully remove from the commode to avoid spillages. Carefully remove bed pan from underneath the resident to avoid spillages and cover with disposable pan cover or paper towel.



3. Transfer the covered commode or bed pan to the sluice room to empty, clean and disinfect. Empty the contents.



4. Immerse the pan into a designated commode/bed pan bucket or sink filled with detergent and warm water.



5. Wash the outside then inside of the pan and dry with disposable paper towels. Dispose of cloth and paper towels.



6. Wipe the outside then inside of the pan with the appropriate chlorine-based disinfectant solution. Leave to air dry. Dispose of cloth.



7. Remove and dispose of gloves, clean hands, then remove and dispose of apron.



8. Wash hands thoroughly with liquid soap, warm running water, dry with paper towels and dispose of.