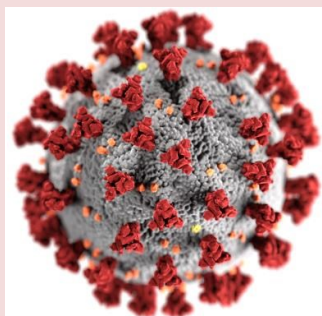


IPC Bulletin for Domiciliary Care staff

Issue No. 20 – April 2020

To support care staff, here is some information on good infection prevention and control (IPC) practice.



COVID-19 (Coronavirus)

This is our second Bulletin on COVID-19. The situation with coronavirus is changing daily with latest updates issued by Public Health England on 06/04/20 available to download at:

www.gov.uk/government/publications/wuhan-novel-coronavirus-infection-prevention-and-control

Please refer to 'COVID-19 personal protective equipment (PPE)' which contains information on 'single use' and 'sessional use' of PPE. There is also helpful information on 'COVID-19: visual guide to safe PPE' and 'Frequently Asked Questions on wearing Personal Protective Equipment (PPE)' available to download.

Recommended PPE for primary, outpatient and community care by setting, NHS and independent sector

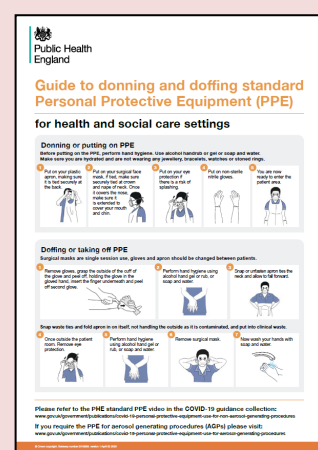
Setting	Contact	Disposable Gloves	Disposable Plastic Apron	Disposable Gown/apron	Surgical mask	Fluid-resistant eye protection	Filtering face piece respirator	Eye/face protection ¹¹
Any setting	Performing an aerosol-generating procedure ¹ on a possible or confirmed case ²	✓ single use ³	✗	✓ single use ³	✗	✗	✗	✓ single use ³
Primary care, ambulatory care, and other non-emergency outpatient and other clinical settings e.g. community, dental, maternity, mental health	Direct patient care – possible or confirmed case ² (within 2 metres)	✓ single use ³	✓ single use ³	✗	✗	✓ single or sessional use ⁴	✗	✓ single or sessional use ³
	Working in reception/communal area with possible or confirmed case ² and unable to maintain 2 metres social distance ⁵	✗	✗	✗	✗	✓ sessional use ⁴	✗	✗
Individual care home (except place of residence)	Direct care to any member of the household where any member of the household is a possible or confirmed case ²	✓ single use ³	✓ single use ³	✗	✗	✓ single or sessional use ⁴	✗	✓ risk assess – single or sessional use ^{3,11}
	Direct care or visit to any individual in the extremely vulnerable group or where a member of the household is either the extremely vulnerable group undergoing shielding ⁶	✓ single use ³	✓ single use ³	✗	✓ single use ³	✗	✗	✗
	Home birth where any member of the household is a possible or confirmed case ²	✓ single use ³	✓ single use ³	✓ single use ³	✗	✓ single or sessional use ⁴	✗	✓ single or sessional use ^{3,11}
Community care home, mental health inpatient and other overnight care facilities e.g. learning disability, hospice, prison healthcare	Facility with possible or confirmed case ² – not direct resident care (within 2 metres)	✓ single use ³	✓ single use ³	✗	✗	✓ sessional use ⁴	✗	risk assess – sessional use ^{3,11}
Any setting	Collection of nasopharyngeal swabs	✓ single use ³	✓ single or sessional use ³	✗	✗	✓ single or sessional use ⁴	✗	✓ single or sessional use ^{3,11}

Table 2

1. This may be a range of possible healthcare procedures for more than one patient.
2. The full list of aerosol-generating procedures (AGPs) is within the IPC guidance from PHE on managing a further wave of patients.
3. Single use includes multiple uses by the same individual, but not multiple uses by different individuals.
4. Single use includes multiple uses by the same individual, but not multiple uses by different individuals.
5. Close contact is defined as being in the same room as a possible or confirmed case for more than 15 minutes, or being in the same room as a possible or confirmed case for more than 15 minutes in a room with poor ventilation.
6. An extremely vulnerable person is someone who is at high risk of severe illness from COVID-19. This includes people who are immunocompromised, have long-term health conditions, are aged 75 or over, or live in a care home. For more information on shielding, see the PHE guidance on shielding.
7. An individual in the extremely vulnerable group is someone who is at high risk of severe illness from COVID-19. This includes people who are immunocompromised, have long-term health conditions, are aged 75 or over, or live in a care home. For more information on shielding, see the PHE guidance on shielding.
8. An individual in the extremely vulnerable group is someone who is at high risk of severe illness from COVID-19. This includes people who are immunocompromised, have long-term health conditions, are aged 75 or over, or live in a care home. For more information on shielding, see the PHE guidance on shielding.
9. An individual in the extremely vulnerable group is someone who is at high risk of severe illness from COVID-19. This includes people who are immunocompromised, have long-term health conditions, are aged 75 or over, or live in a care home. For more information on shielding, see the PHE guidance on shielding.
10. An individual in the extremely vulnerable group is someone who is at high risk of severe illness from COVID-19. This includes people who are immunocompromised, have long-term health conditions, are aged 75 or over, or live in a care home. For more information on shielding, see the PHE guidance on shielding.
11. For information on shielding and definition of extremely vulnerable groups see guidance from PHE on shielding and protecting extremely vulnerable people from COVID-19.

Recommended PPE for primary, outpatient and community care by setting, NHS and independent sector (see Table 2) on the link above.

Please also refer to **Table 4: Additional considerations for COVID-19.**



Guidance on donning and doffing standard Personal Protective Equipment (PPE) has also been updated on 03/04/20 available to download at:

www.gov.uk/government/publications/covid-19-personal-protective-equipment-use-for-non-aerosol-generating-procedures

For COVID-19 guidance on home care and supported living, please refer to the documents below:

<https://www.gov.uk/government/publications/covid-19-residential-care-supported-living-and-home-care-guidance/covid-19-guidance-on-home-care-provision>

<https://www.gov.uk/government/publications/covid-19-residential-care-supported-living-and-home-care-guidance/covid-19-guidance-for-supported-living-provision>

Visit our website to view a range of resources for Domiciliary Care www.infectionpreventioncontrol.co.uk