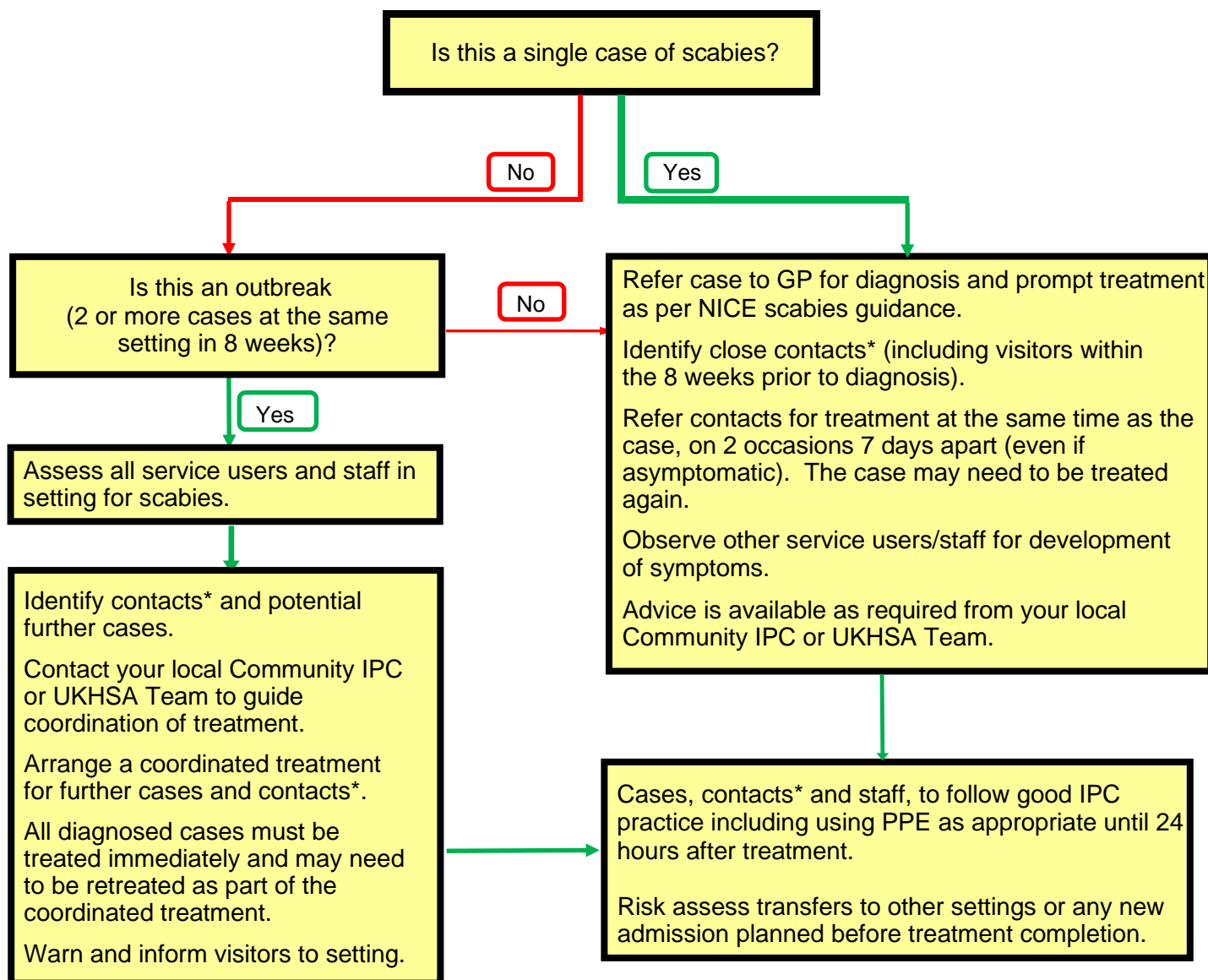


## Action plan for the management of scabies in health and social care settings



\*Close contacts may include:

- All service users unless there is a clear rationale for more limited tracing
- Service users on a single affected floor or wing if there is no mixing or movement of staff or service users between floors or wings
- All members of staff (including agency staff), exposed to the index case without wearing appropriate PPE
- Visitors to the setting who have had prolonged or frequent skin-to-skin contact with a case, such as holding hands
- Ancillary staff, for example, hairdressers, podiatrists, community health professionals and agency staff, who have had prolonged or frequent skin-to-skin contact without PPE

Adapted from UKHSA guidelines for the management of scabies cases and outbreaks in communal residential settings, April 2025